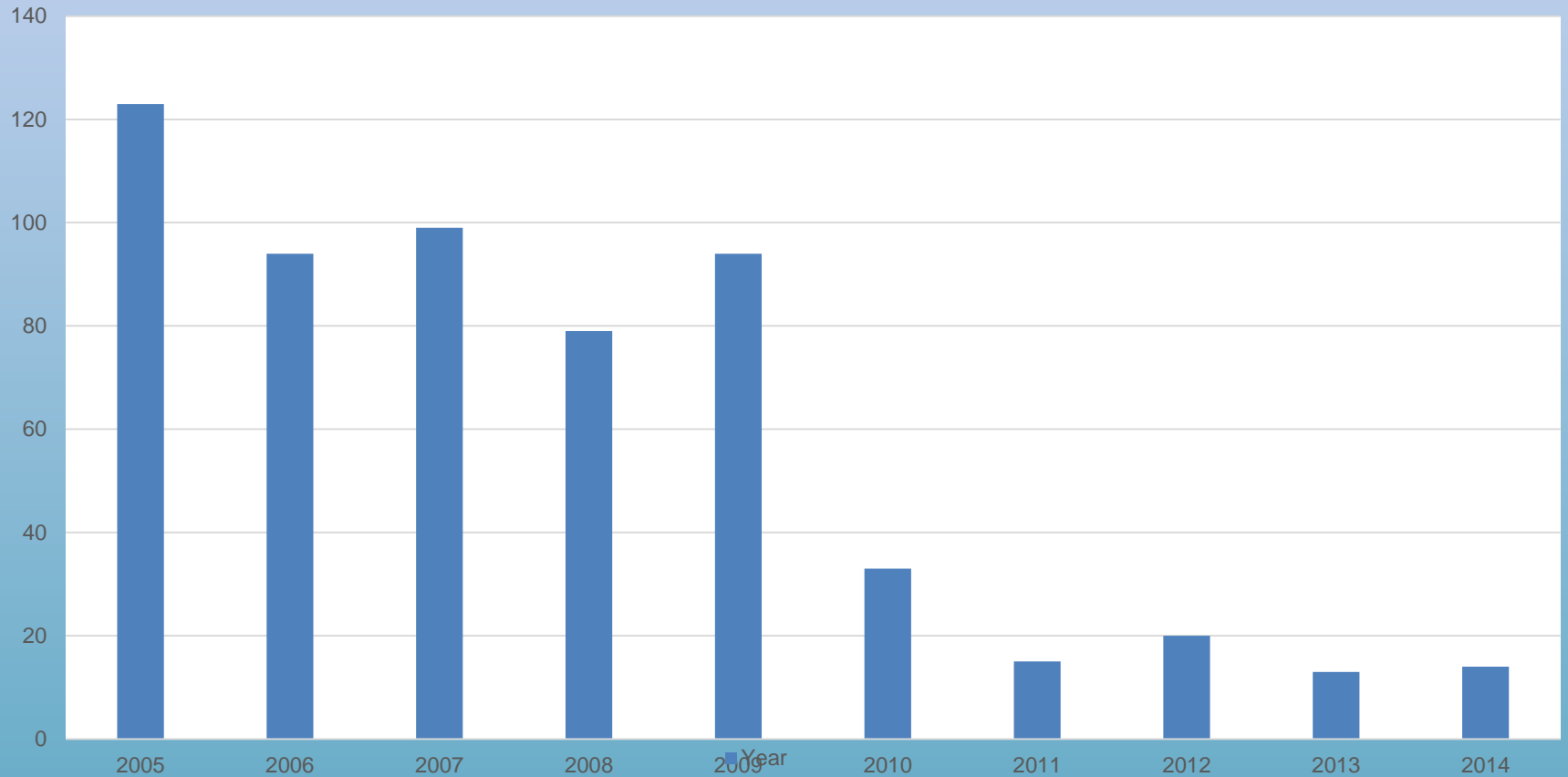


Snap Shot of Selma Alabama



Violent Juvenile Crime Rates Dallas County



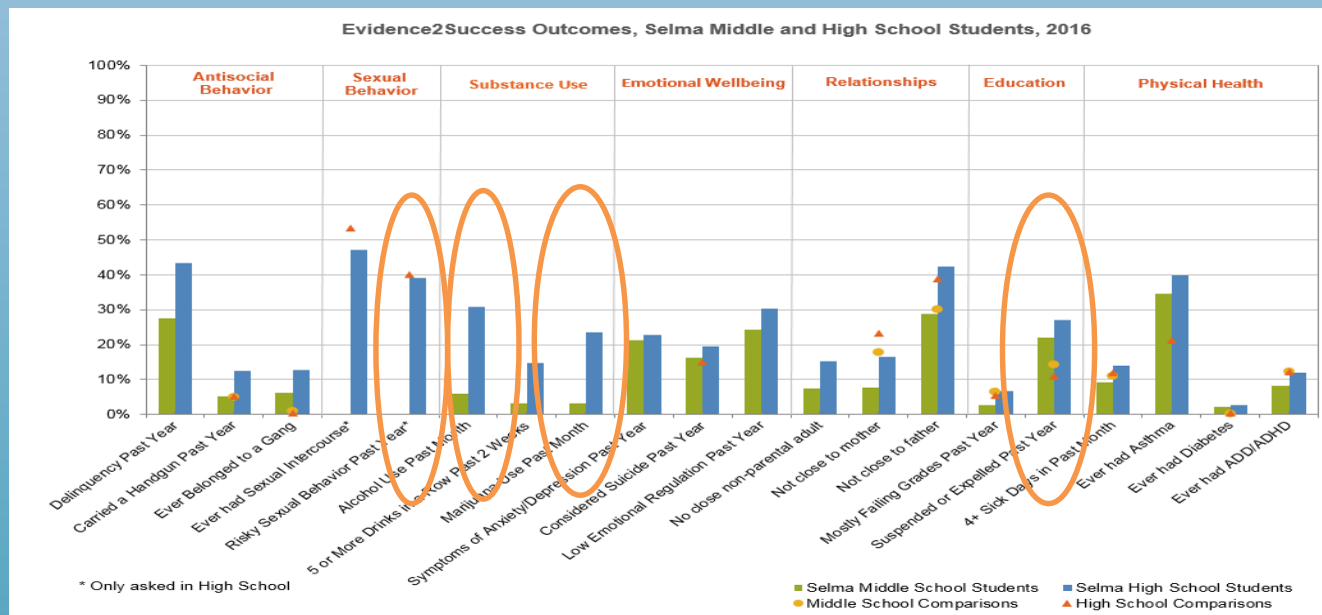
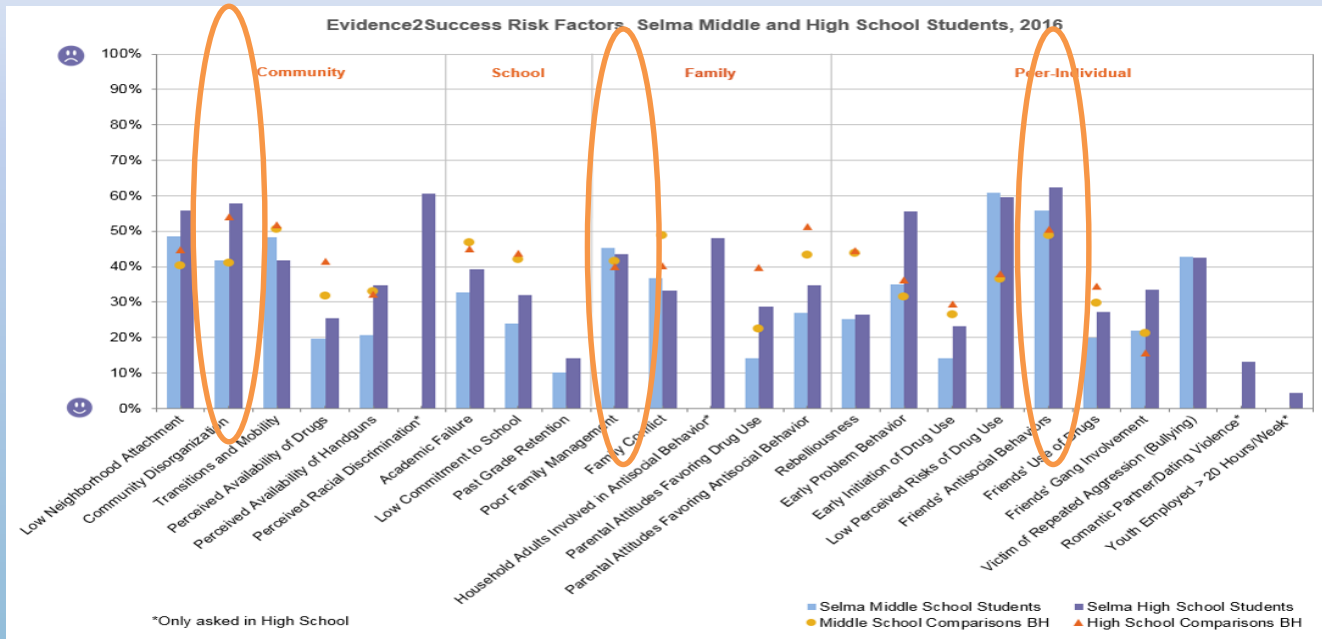


Big Picture



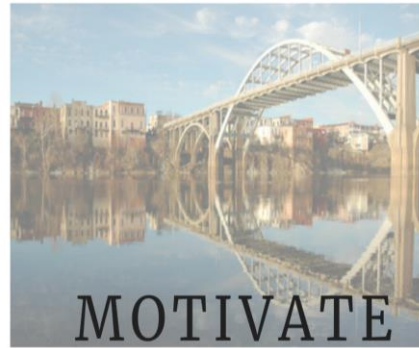
Protective Factors

Risk Factors



Risk Factors for Adolescent Problem Behavior	Substance Abuse	Delinquency	Teen Pregnancy	School Dropout	Violence	Depression & Anxiety
Community						
Availability of Drugs	.				.	
Availability of Firearms		.			.	
Community Laws and Norms Favorable Toward Drug Use, Firearms, and Crime	.	.			.	
Media Portrayals of the Behavior	.				.	
Transitions and Mobility
Low Neighborhood Attachment and Community Disorganization	.	.			.	
Extreme Economic Deprivation	
Family						
Family History of the Problem Behavior
Family Management Problems
Family Conflict
Favorable Parental Attitudes and Involvement in the Problem Behavior	.	.			.	
School						
Academic Failure Beginning in Late Elementary School
Lack of Commitment to School	
Individual/Peer						
Early and Persistent Antisocial Behavior
Rebelliousness	
Gang Involvement	.	.			.	
Friends Who Engage in the Problem Behavior	
Favorable Attitudes Toward the Problem Behavior	
Early Initiation of the Problem Behavior	
Constitutional Factors

Community Priorities



dallas county
CPC
children's policy council

THE ANNIE E. CASEY
FOUNDATION

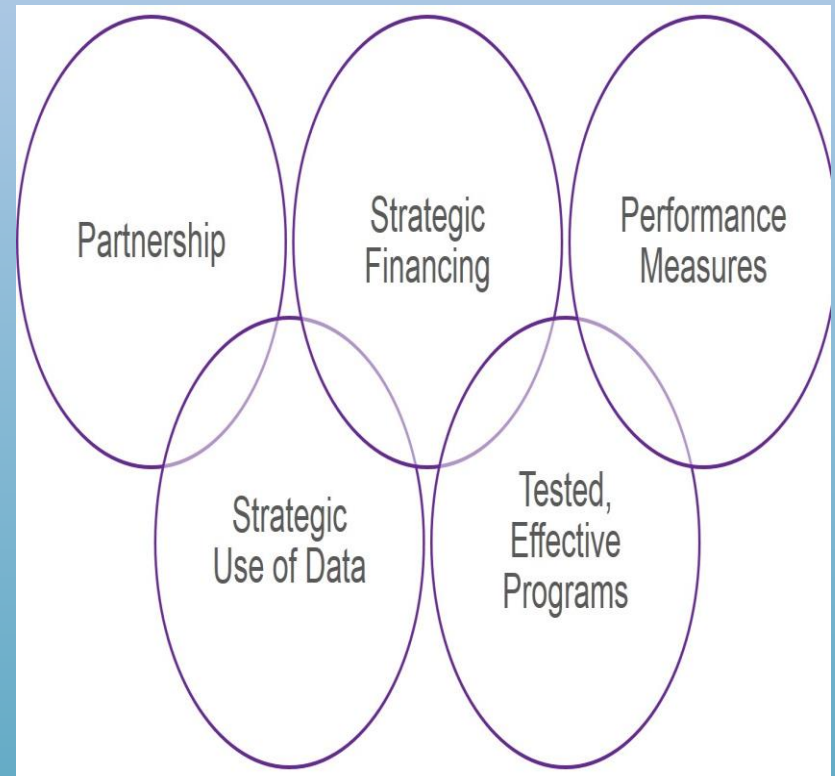
Priority High Risk Behaviors

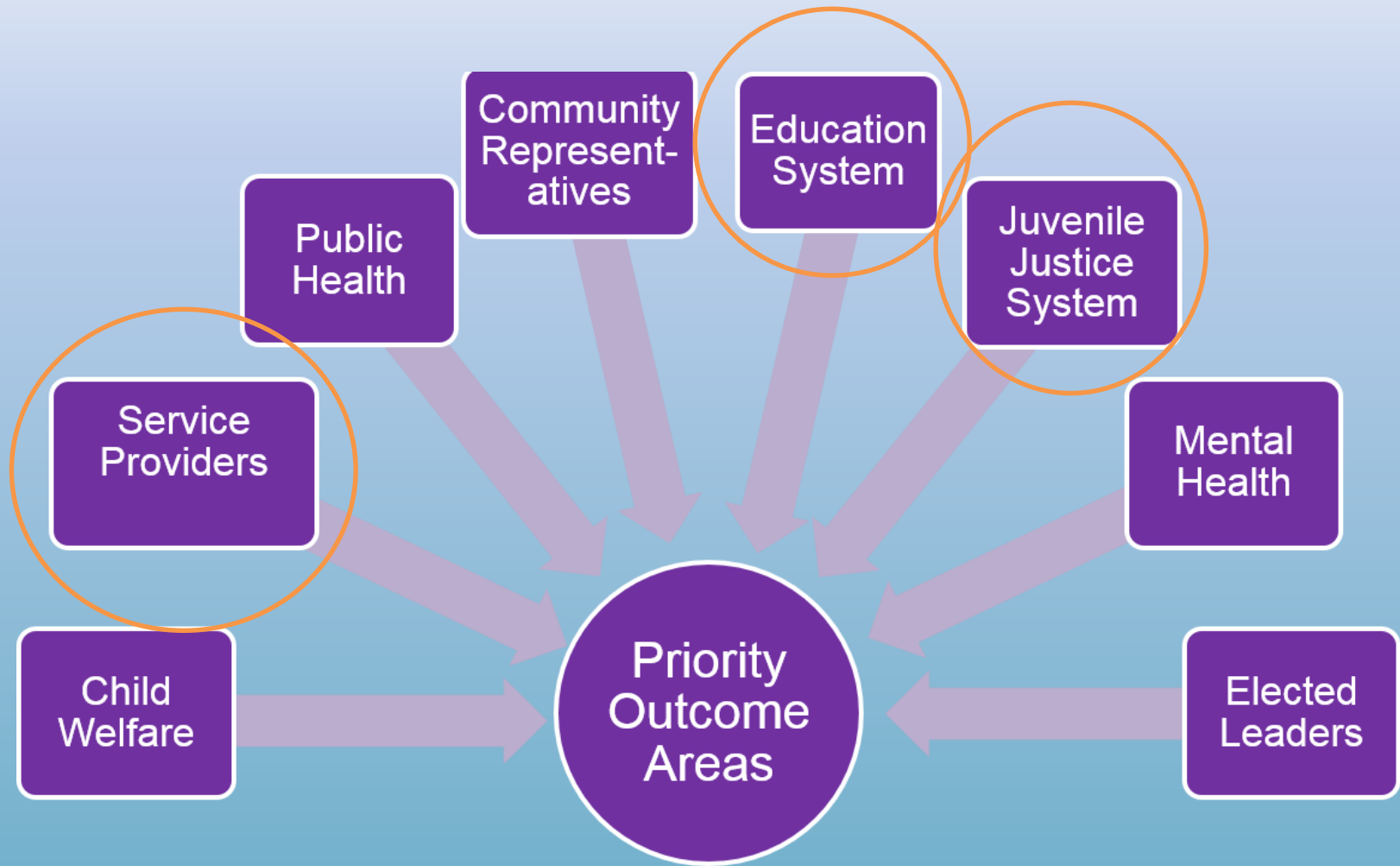
Poor Family Management
Community Disorganization
Low Perceived Risk of Drugs
Peers with Antisocial Behaviors

Priority Outcomes

Substance Abuse
Risky Sexual Behaviors
Poor Emotional Regulation

Tools for Improving Youth Outcomes



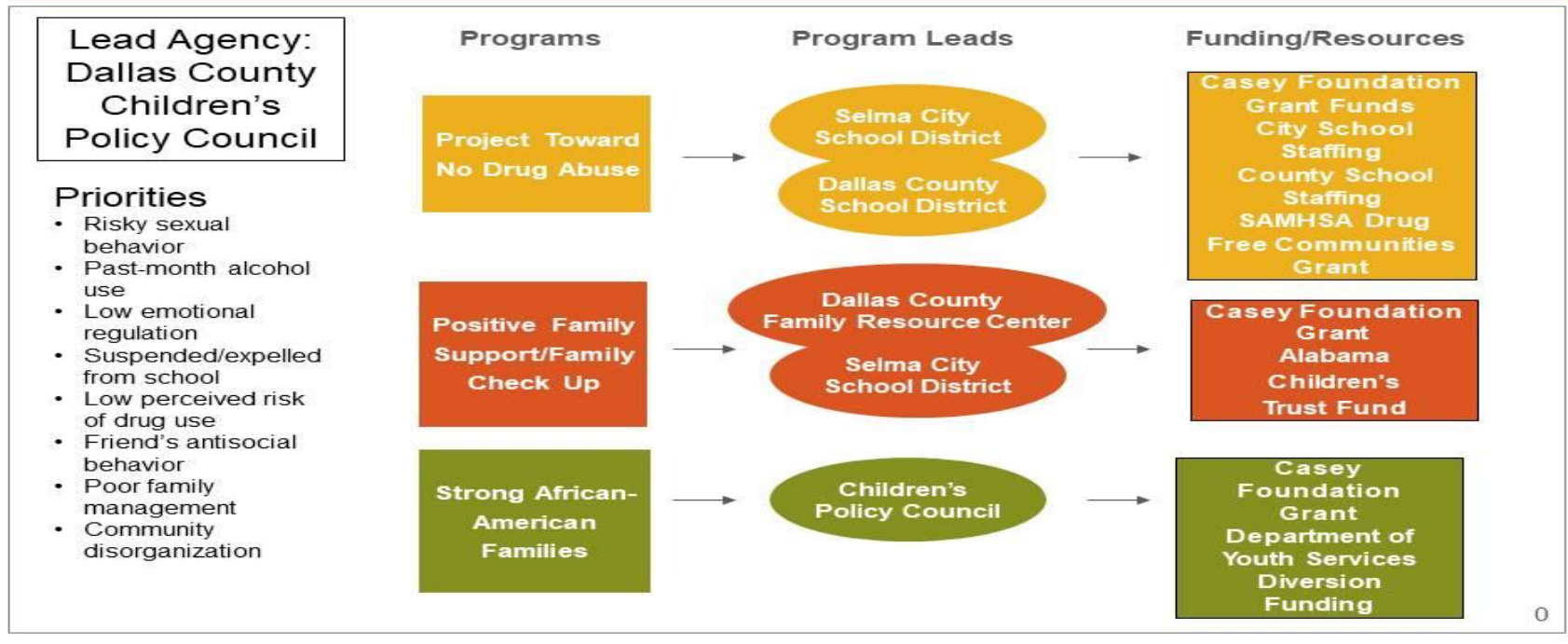


*Graphic Courtesy of: Anne E. Casey Foundation

Funding Overview



Strategic Financing Example: Dallas County



0

Dallas County Selected Interventions



- Strong African American Families Program-Teens



- Positive Family Support-Family Check Up



- Project Toward No Drug Abuse

Short-Term Accomplishments



- Data used to leverage funding for other federal grants and state grants
- Evaluate if local programs are measuring the intended outcome
- Increased opportunities to share data and make joint decisions about outcomes